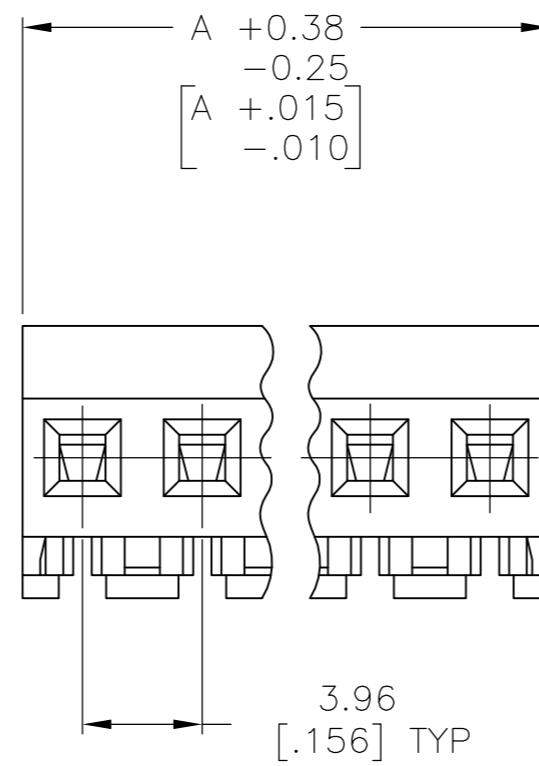
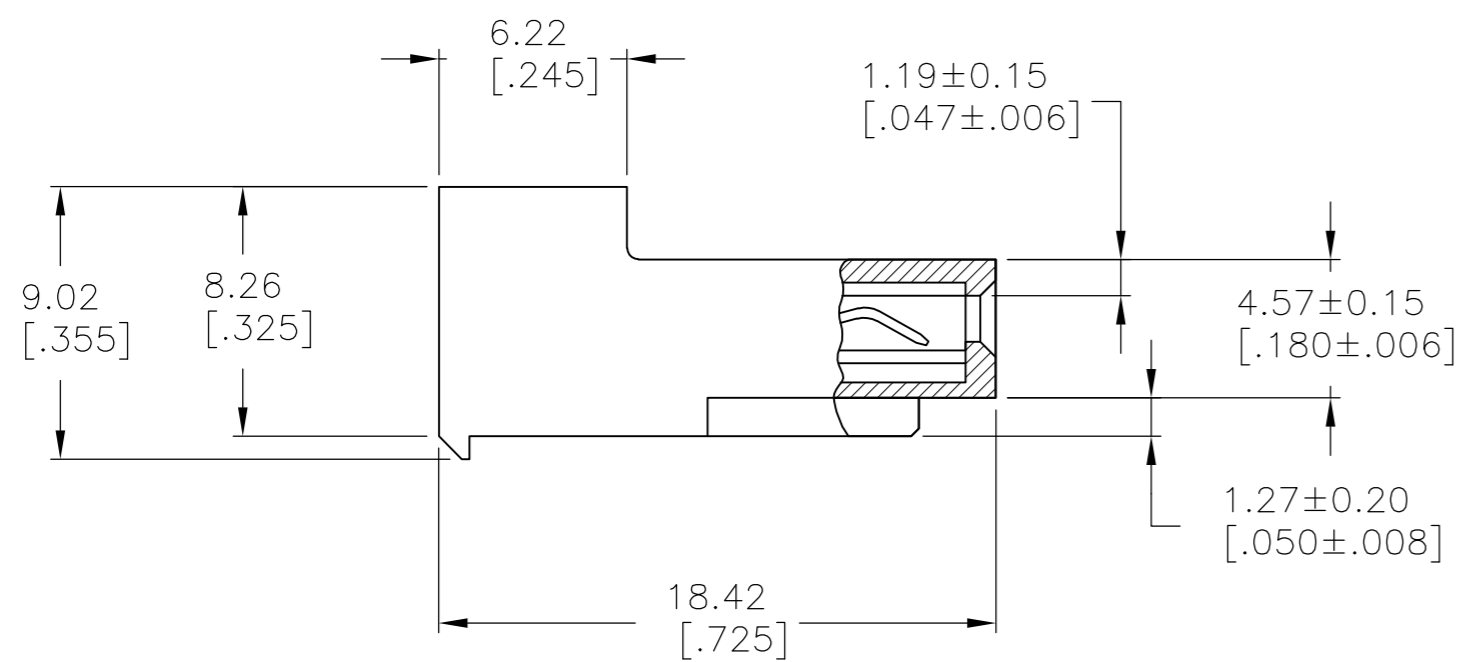
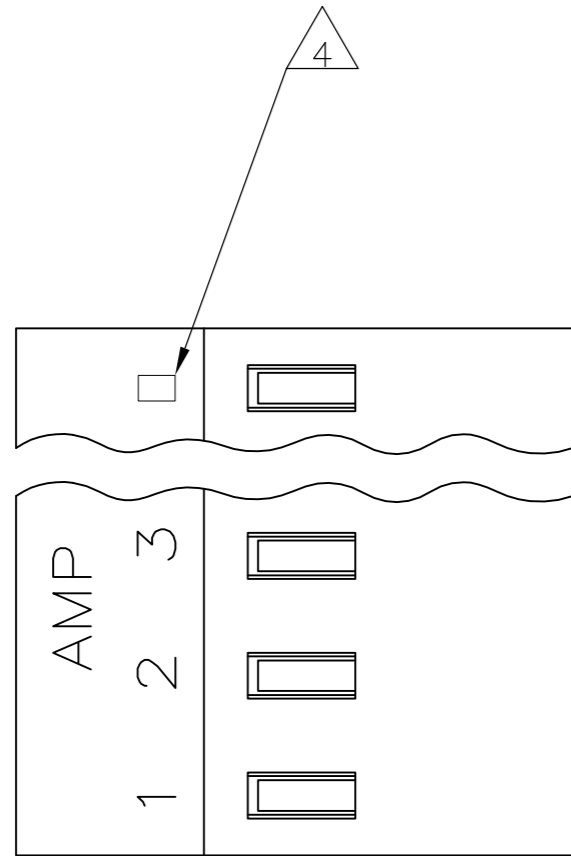


THIS DRAWING IS UNPUBLISHED. RELEASED FOR PUBLICATION
 © COPYRIGHT BY TYCO ELECTRONICS CORPORATION. ALL RIGHTS RESERVED.

LOC	DIST	REVISIONS			
P	LTR	DESCRIPTION	DATE	DWN	APVD
CM	54	D	ECO-07-012890	22JUN07	KW DB

- 1 MATERIAL: CONNECTOR - NYLON UL94V-0 (BLACK).
 CONTACTS - 0.30[.012] THICK COPPER ALLOY
 (BRIGHT-TIN LEAD 0.00203
 [.000080] MIN THK FOR CONTACTS
 644501-2 THRU 1-644501-2, MATTE
 WHISKER MITIGATED TIN 0.00203 (.000080)
 MIN THICKNESS OVER NICKEL UNDERPLATE
 FOR 3-644501-2 THRU 4-644501-2)
- 2. CONTACTS ACCEPT 22 AWG WIRE WITH 2.41[.095] MAX
 INSULATION DIAMETER.
- 3. CONTACTS MUST ACCEPT 1.14±0.03[.045±.001] SQUARE POST AND
 REMAIN LOCKED IN POSITION.
- 4 IDENTIFICATION NUMBER FOR LAST CIRCUIT MAY NOT APPEAR ON
 ALL ASSEMBLIES.
- 5. DIMENSIONS IN BRACKETS ARE IN INCHES.
- 6. HOUSING FEATURES ARE: CLOSED END WITHOUT LOCKING RAMP.



47.55 [1.872]	12	4-644501-2
43.59 [1.716]	11	4-644501-1
39.62 [1.560]	10	4-644501-0
35.66 [1.404]	9	3-644501-9
31.70 [1.248]	8	3-644501-8
27.74 [1.092]	7	3-644501-7
23.77 [.936]	6	3-644501-6
19.81 [.780]	5	3-644501-5
15.85 [.624]	4	3-644501-4
11.89 [.468]	3	3-644501-3
7.92 [.312]	2	3-644501-2
47.55 [1.872]	12	1-644501-2
43.59 [1.716]	11	1-644501-1
39.62 [1.560]	10	1-644501-0
35.66 [1.404]	9	644501-9
31.70 [1.248]	8	644501-8
27.74 [1.092]	7	644501-7
23.77 [.936]	6	644501-6
19.81 [.780]	5	644501-5
15.85 [.624]	4	644501-4
11.89 [.468]	3	644501-3
7.92 [.312]	2	644501-2
DIM A	NO. OF CIRCUITS	PART NO.

THIS DRAWING IS A CONTROLLED DOCUMENT.

DWN B. LEWIS 12FEB91	Tyco Electronics Corporation Harrisburg, Pa 17105-3608				
CHK R. SWING 12FEB91					
APVD D. CLARK 20FEB91					
PRODUCT SPEC 108-1051					
APPLICATION SPEC 114-1020	NAME MTA 156 CONNECTOR ASSEMBLY, 22 AWG,UL94V-0, SPECIAL				
MATERIAL 1	FINISH 1	SIZE A2	CAGE CODE 00779	DRAWING NO C=644501	RESTRICTED TO -
CUSTOMER DRAWING			SCALE 4:1	SHEET 1 OF 1	REV D

